

Engineered Solutions & Technical Capabilities

Vacuum & Compressor Skid Systems

- 300+ standard packages available for lab, medical, or industrial applications.
- Ranging from simplex 1 HP to hexaplex 25 HP systems.
- Our modular systems and extensive pump inventory support quick delivery.

[Learn More >>](#)



Fabrication

- All solutions built to your specifications.
- Custom manufactured frame assemblies, tanks, plumbing, control systems, containers and more.
- On-site electricians, plumbers, carpenters, and welders allow us to manufacture a wide variety of custom systems.

[Learn More >>](#)



Engineering & Service Expertise

- Product selection assistance for all industrial equipment.
- Support with system analysis and cost-saving solutions.
- Recommendations for equipment and maintenance selection.
- Expertise on laboratory, industrial, and NFPA air & vacuum systems, soil vapor extraction, air sparge, groundwater treatment, and site remediation.

[Learn More >>](#)



Manufacturing Capabilities

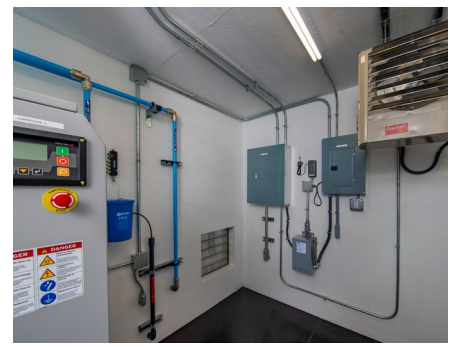
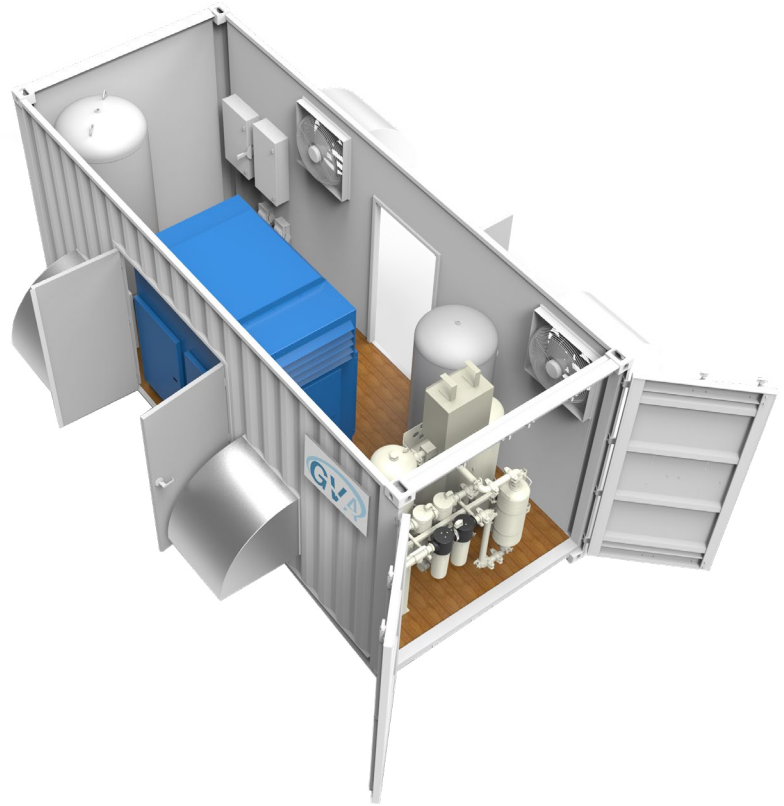
- 75,000 ft² facility for manufacturing systems without size limitations for quick delivery.
- Metal forming capabilities to cut, bend, weld, and shape various materials to meet your needs competitively.
- Engineering support, sales support, field service, and customer service.

[Learn More >>](#)

Customized Container Systems Mobile Engineered Solutions

- 8' to 40' customized containers with full electrical and plumbing for outdoor standalone use.
- Get help choosing the best solution from our equipment range, or use your own customer supplied equipment.
- We will mount and plumb your mechanical & electrical equipment, such as compressors, dryers, blowers, pumps, control panels, system monitoring, lighting, and more.
- Steel enclosures, wooden enclosures, skid mounted equipment, and trailer systems are just some of the common systems we fabricate.
- Our team will arrange and execute delivery of the equipment to your site in North America.

[Learn More >>](#)



Tanks

- Multiple tank sizes & configurations in stock with competitive pricing for quick delivery.
- Painted, epoxy lined, galvanized and other options available.
- Tanks customized to your specifications.
- We will incorporate access lids, mounts, additional connections, and much more.

[Learn More >>](#)

